

# Cogongrass – Why Should I Care?

Cogongrass (*Imperata cylindrica*) is recognized as one of the world's worst weeds. This non-native grass is widely distributed in Florida and the Southeastern U.S. It is a **serious threat** to public and private forests, agricultural lands, and natural areas. The use of “**threat**” here is not a scare tactic or clever politically correct strategy. Cogongrass is a **threat**.

## Why?

Cogongrass is **aggressive** and **invasive**. It spreads by means of airborne seeds and very efficient underground rhizomes. It takes advantage of sites disturbed in agricultural, silvicultural, logging and construction activities. It is a master at “relocating” via contaminated logging, forestry, and road construction/maintenance equipment. Once established, cogongrass is **extremely difficult to control**. Eradication may require **3-5 years** of diligent and costly herbicide treatments.

## So What?

If you have cogongrass –

- it will spread and your situation will worsen
- it will decrease native plant biodiversity and wildlife habitat quality
- it is not palatable as a livestock forage
- it will increase your fire hazard and associated damages
- it will impact your neighbors' property
- it will make pine regeneration nearly impossible
- it will decrease your land management options
- it will lower the value of your real estate



Recognized as both a **state and federal noxious weed**, cogongrass is **regulated**; it is **illegal** to sell hay or sod from cogongrass-infested fields. Human movement of the grass in any fashion is **illegal**.

Additional **information** and **photos** at [http://www.fl-dof.com/forest\\_management/fh\\_invasives\\_cogon.html](http://www.fl-dof.com/forest_management/fh_invasives_cogon.html)

For **treatment** see [http://plants.ifas.ufl.edu/parks/cogon\\_grass.html](http://plants.ifas.ufl.edu/parks/cogon_grass.html)

For **assistance** visit <http://floridainvasives.org> or contact your local County Forester or Extension Agent.

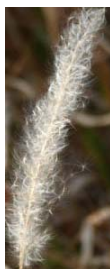
The longer you delay treatment – the **more expensive** treatment will be.



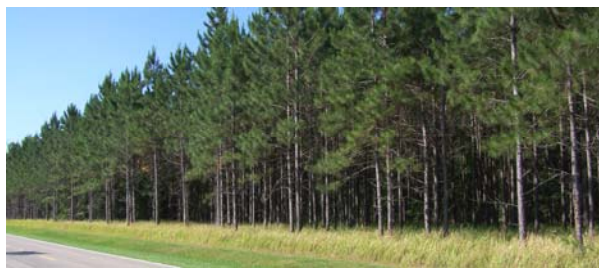
*Rhizomes*



*Leaf blade*



*Seed head*



*Roadside infestation*

FLORIDA DEPARTMENT OF AGRICULTURE AND CONSUMER SERVICES  
Adam H. Putnam, Commissioner

FLORIDA FOREST SERVICE  
James R. Karels, Director