



**DIVISION OF AGRICULTURE
RESEARCH & EXTENSION**

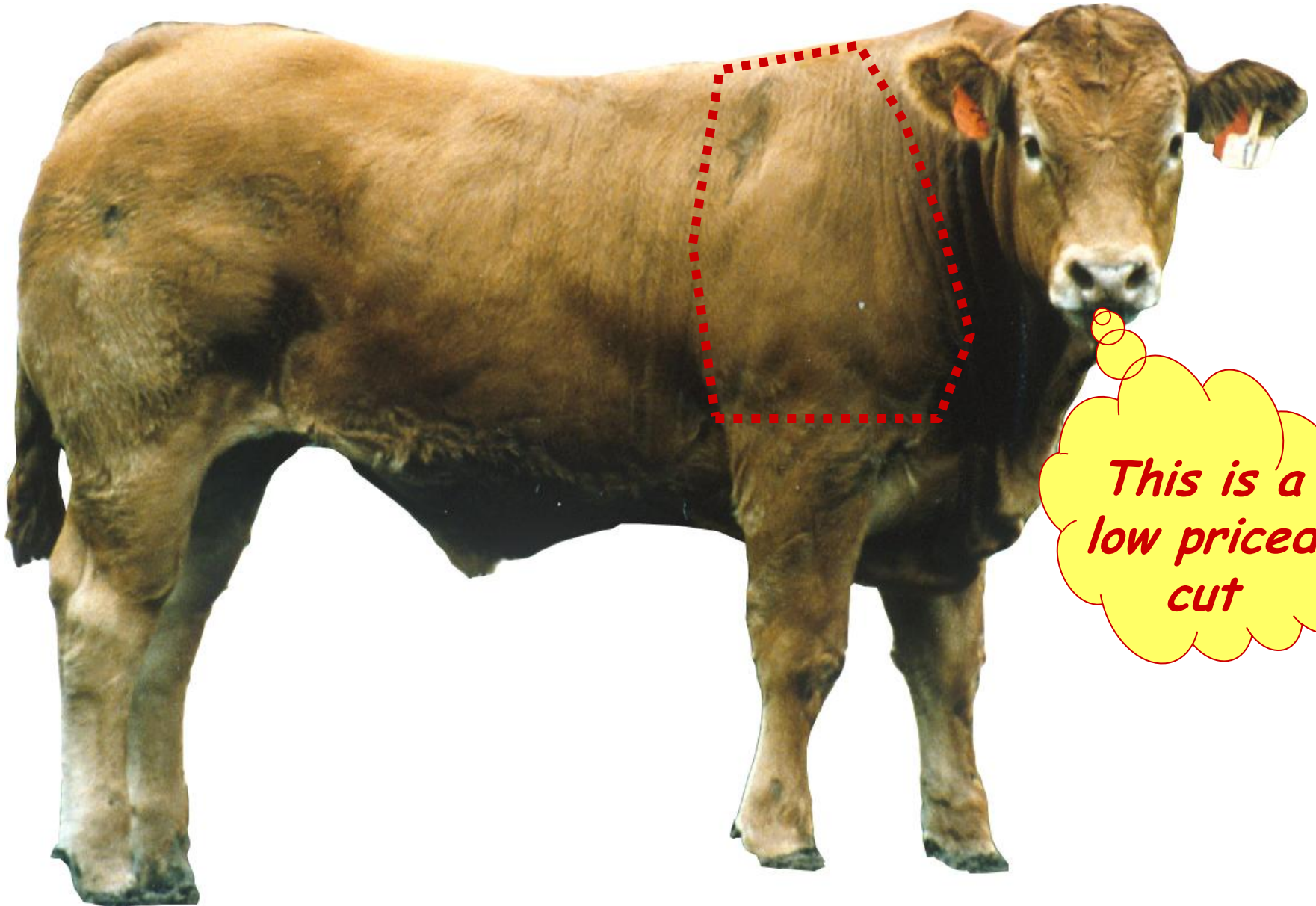
University of Arkansas System

Wholesale Cuts of Beef

University of Arkansas, United States Department of Agriculture and County Governments Cooperating.

The Arkansas Cooperative Extension Service offers its programs to all eligible persons regardless of race, color, national origin, religion, gender, age, disability, marital or veteran status, or any other legally protected status, and is an Affirmative Action/Equal Opportunity Employer.

Chuck



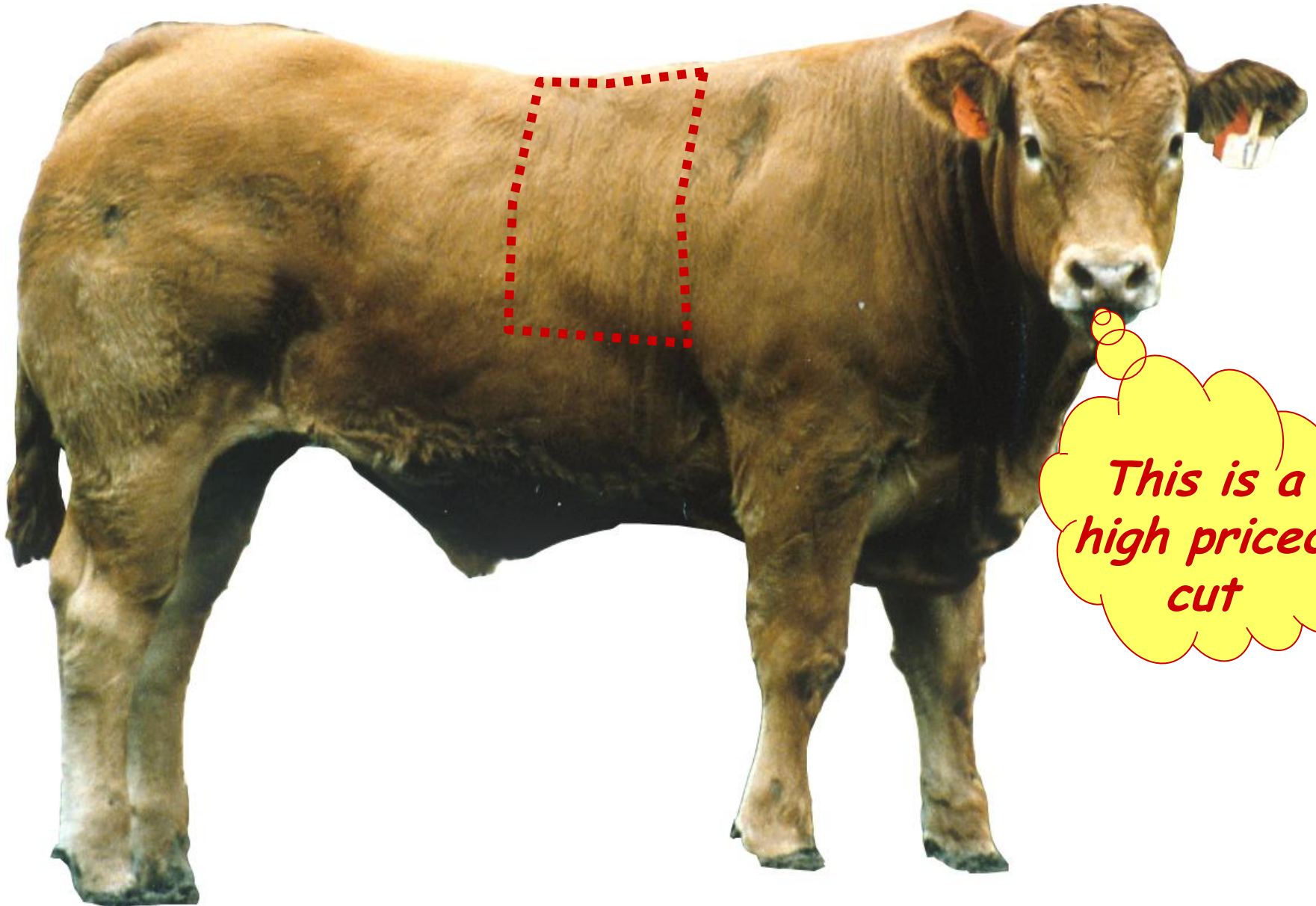
*This is a
low priced
cut*

Brisket



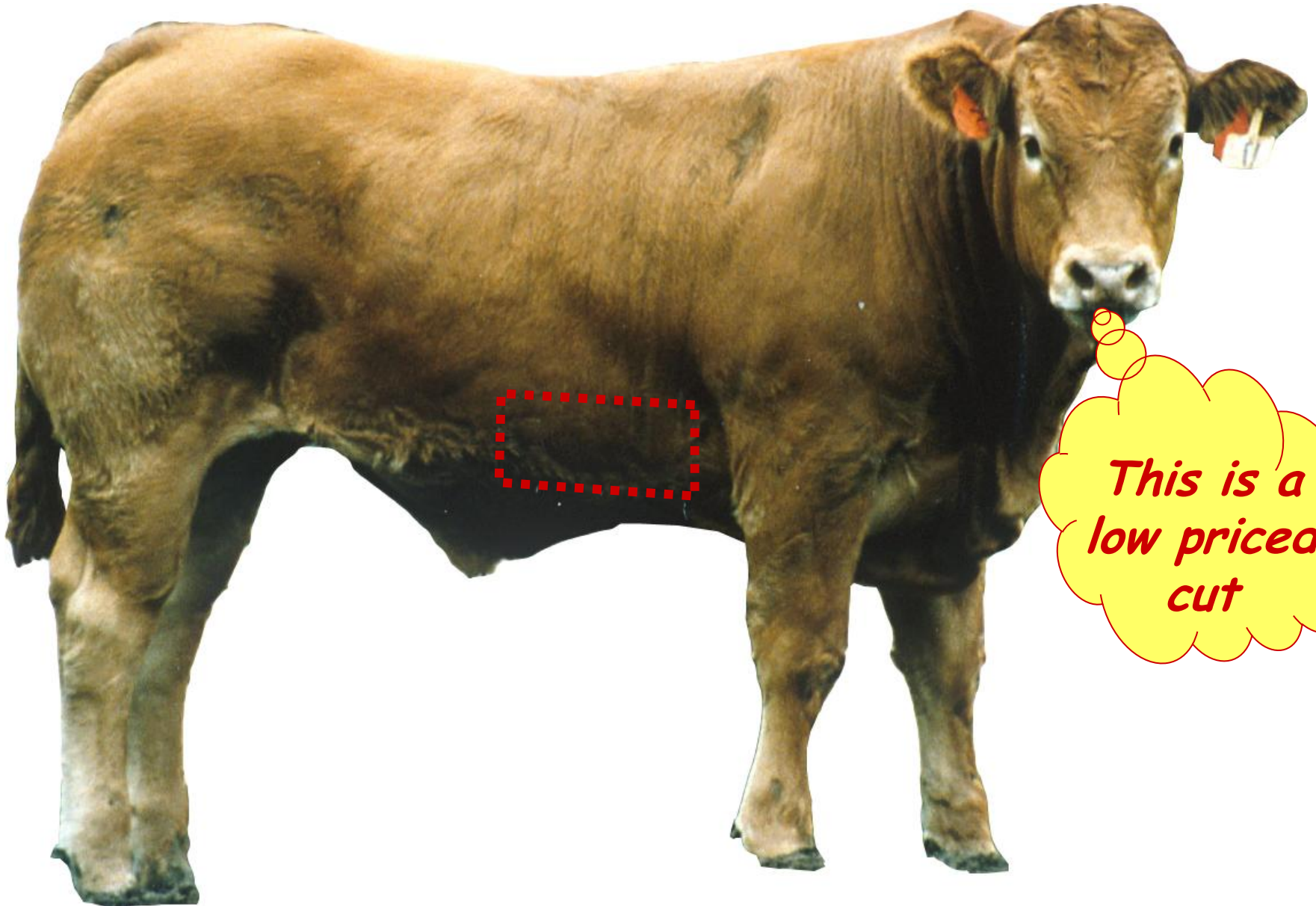
*This is a
low priced
cut*

Rib



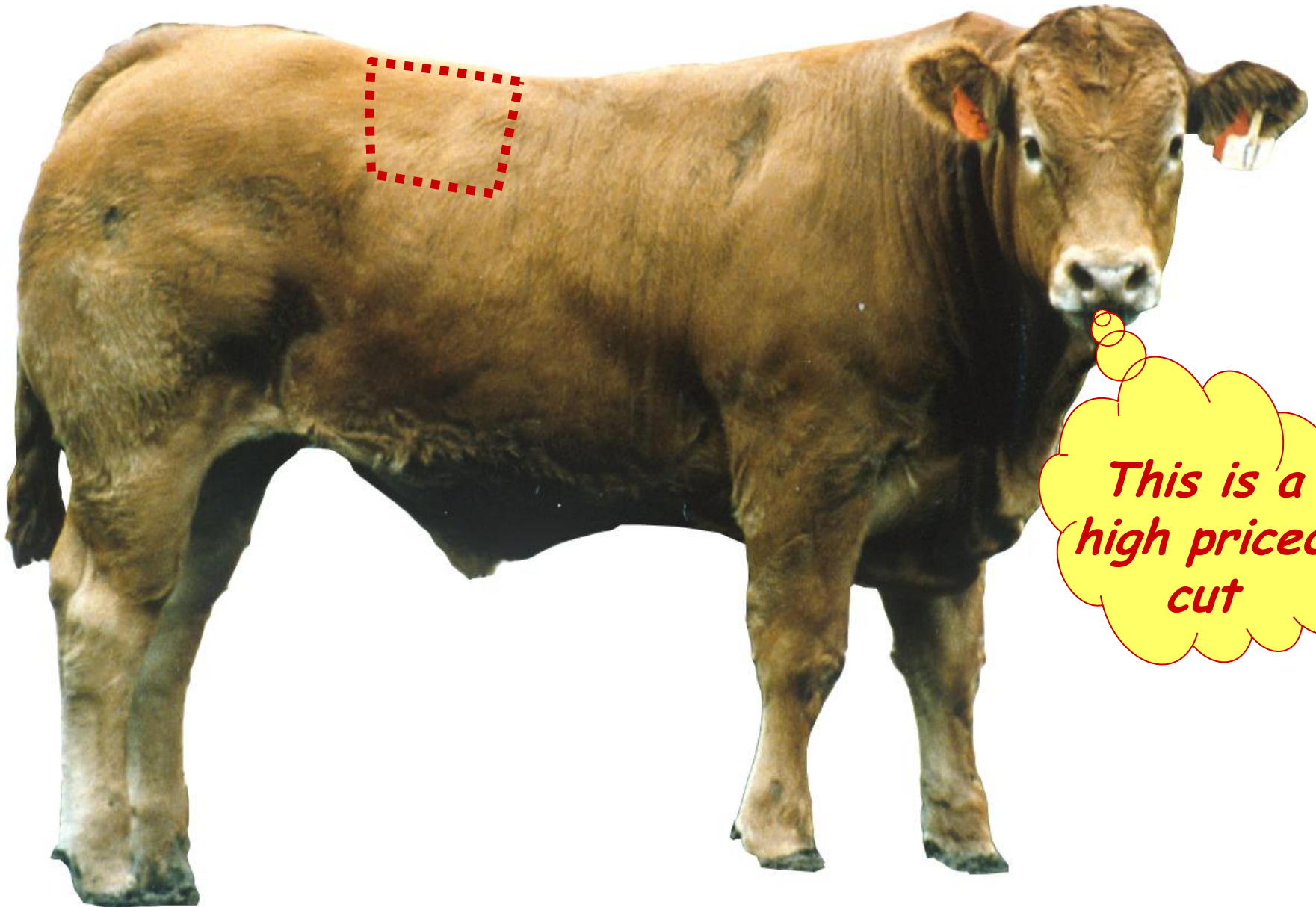
*This is a
high priced
cut*

Plate



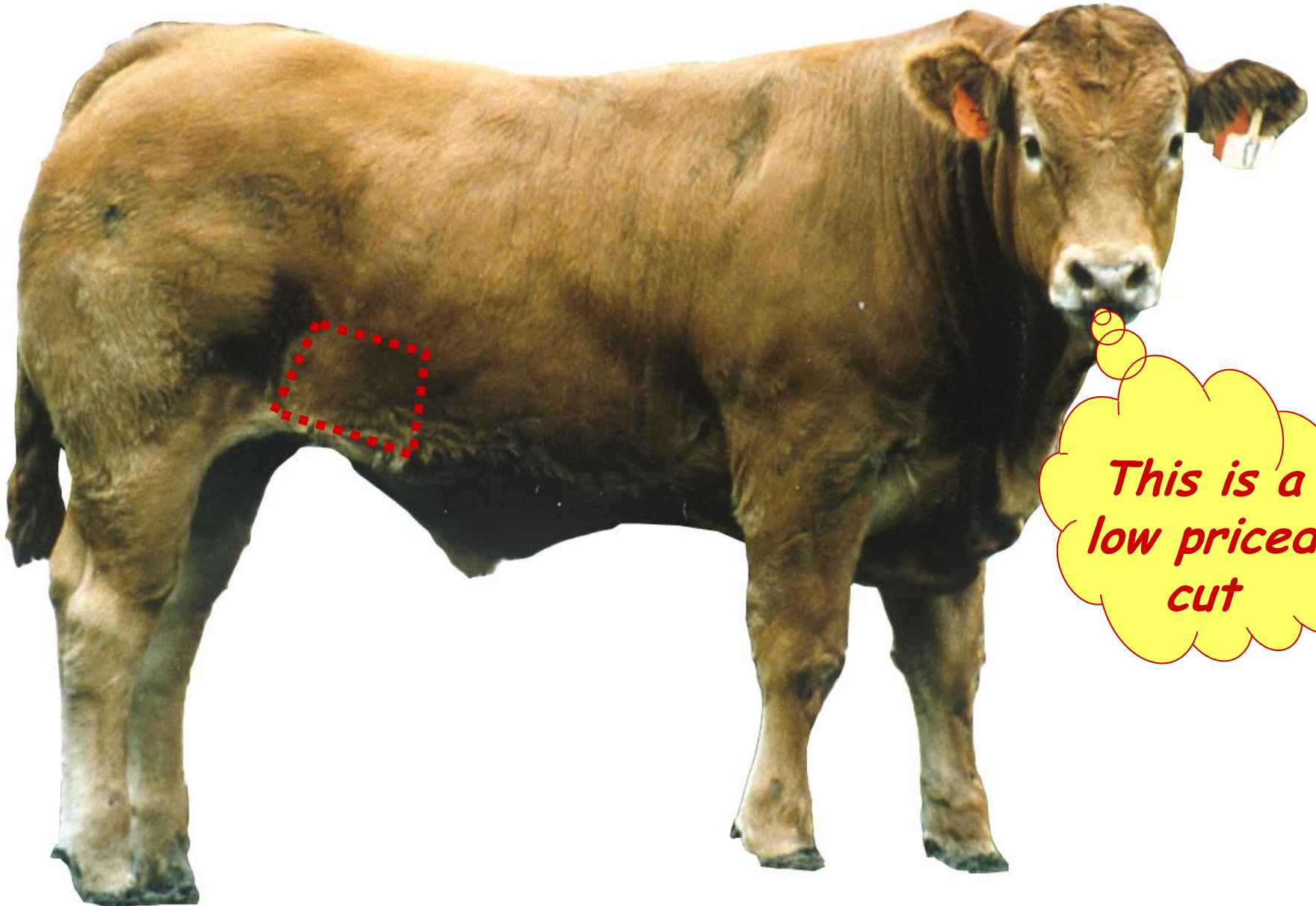
*This is a
low priced
cut*

Loin



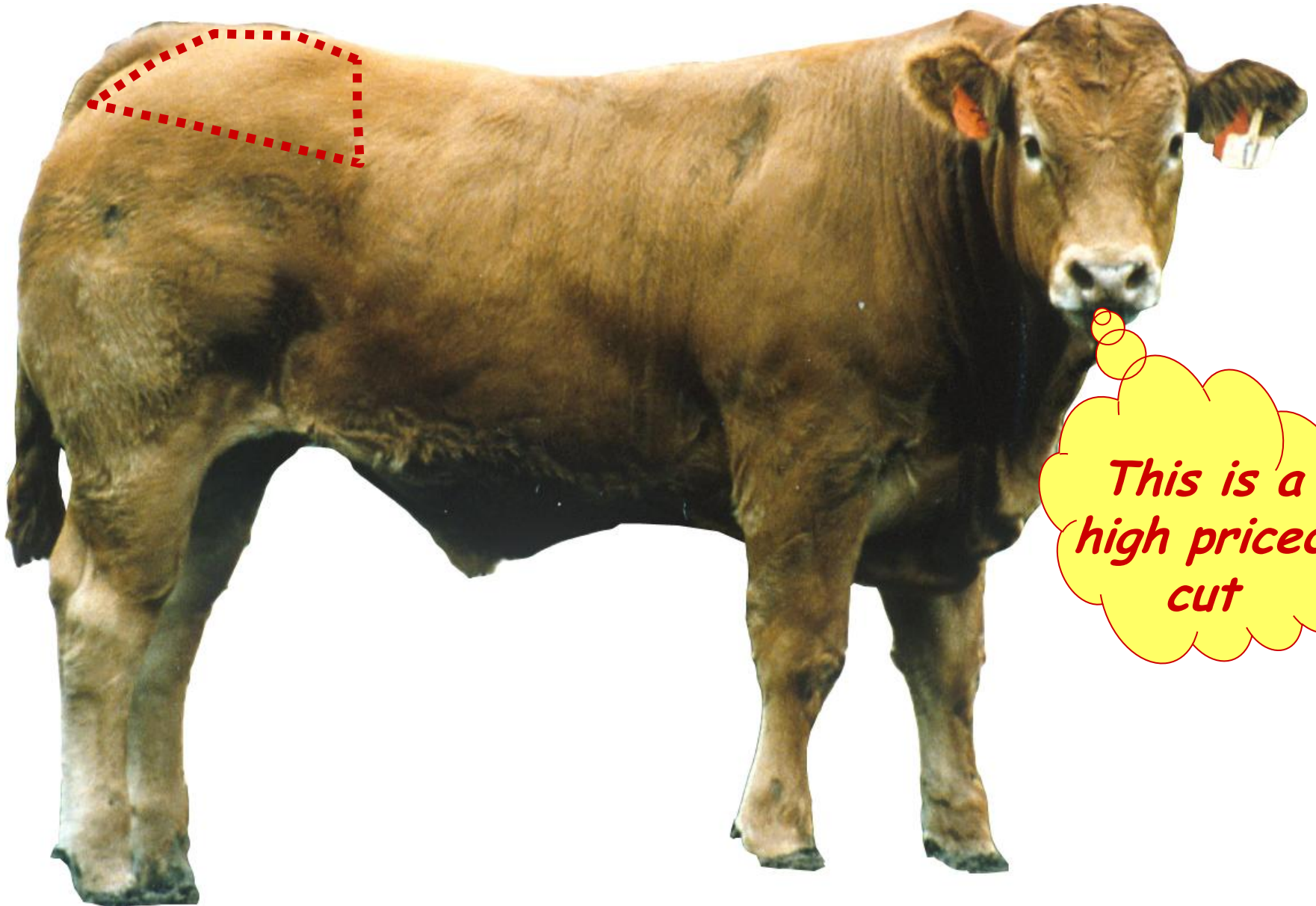
*This is a
high priced
cut*

Flank



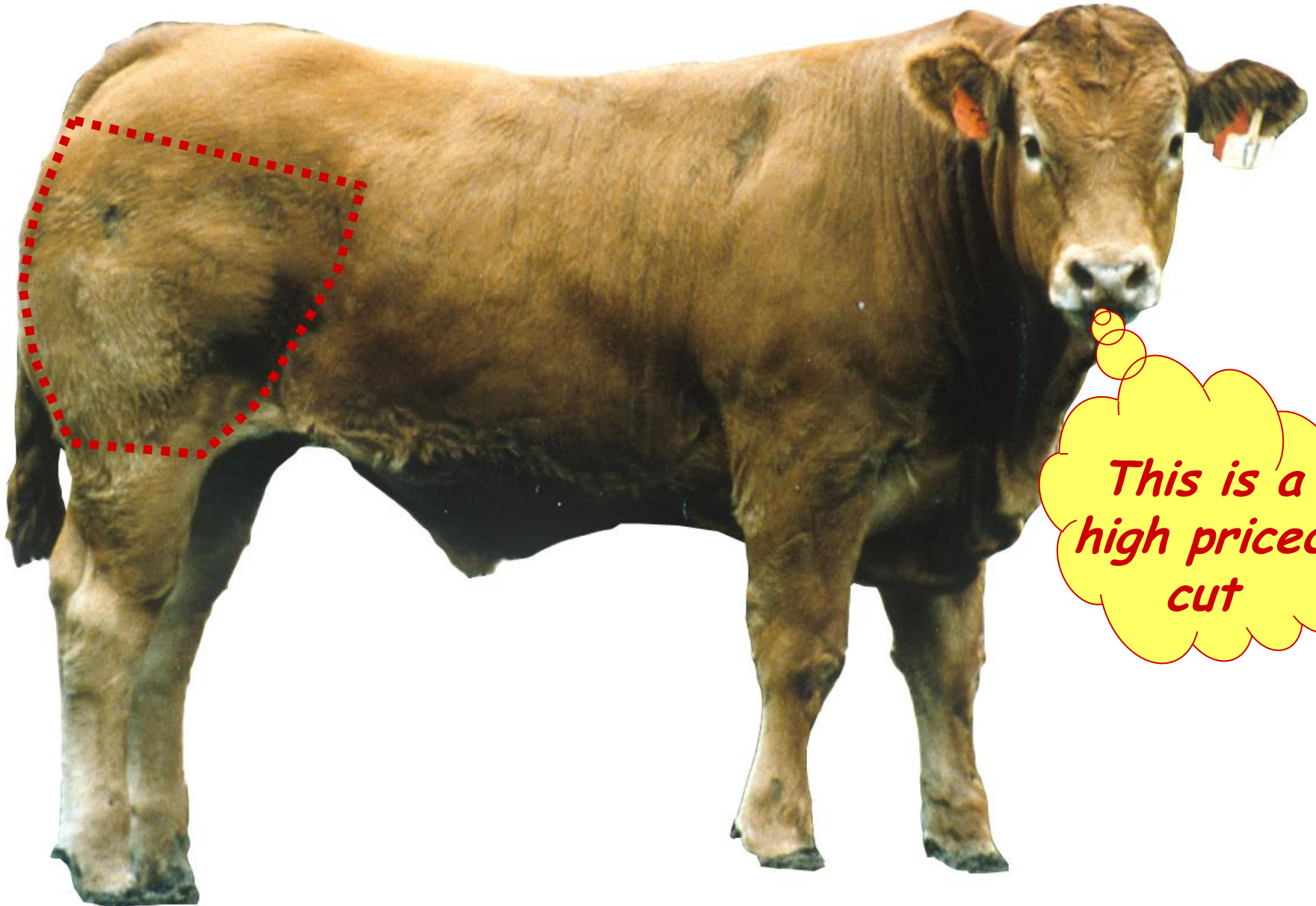
*This is a
low priced
cut*

Rump



*This is a
high priced
cut*

Round



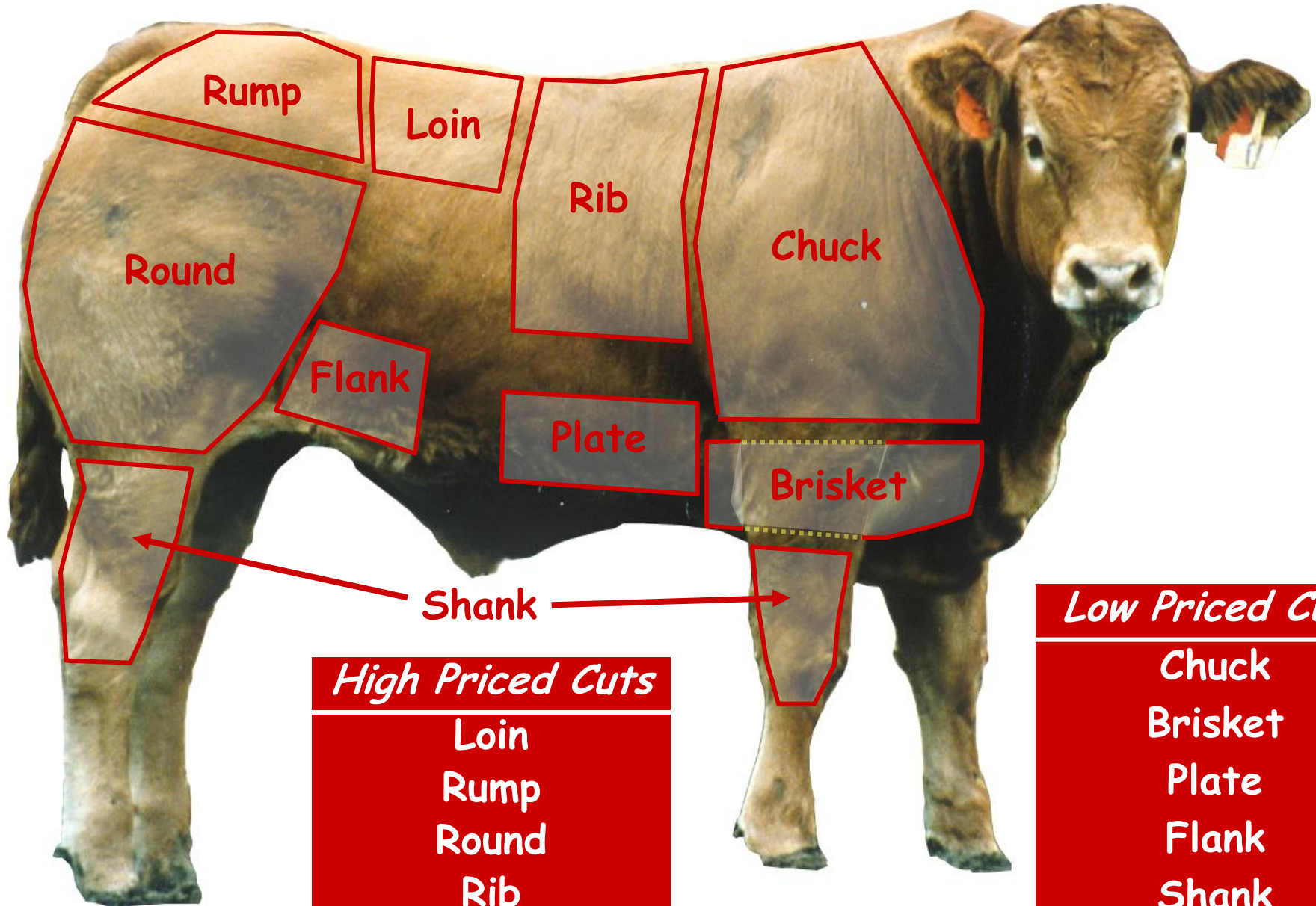
*This is a
high priced
cut*

Shank



*This is a
low priced
cut*

Summary of Wholesale Cuts



High Priced Cuts

Loin
Rump
Round
Rib

Low Priced Cuts

Chuck
Brisket
Plate
Flank
Shank