

**Pulaski County
Extension
Homemakers**



EIN and EHC

All Extension Homemaker Clubs should have a Tax ID (EIN). Does your club have one? EINs are Employer ID Number and give structure to County Extension Homemaker Councils and Clubs.

Council Officers

President:

Mary Gray

1st Vice President:

Faye Suitt

2nd Vice President:

Carolyn Leuenhagen

3rd Vice President:

Ellen McClosky

Secretary:

Jean George

Treasurer:

Sue Senn

Parliamentarian:

Joy Young

★★★★★

**Pulaski County's
AEHC President
Joyce Hall**

A fence needs to be
horse-high, pig-tight,
and bull-strong.

What is an EIN?

A unique number that identifies the organization to the IRS—much like our personal Social Security Numbers identify individuals to the IRS.

If a Social Security Number is used for the club's bank account, the money in it belongs to that person. Money can be tied up in the event of bankruptcy, litigation, divorce or death. If the account earns interest, it will be reported to the IRS using the SSN.

How does a club apply for a Tax ID (EIN) Number?

- Call the IRS for a EIN# at 1-800-829-4933 or
- Fax IRS to have a number assigned 1-859-669-5760 or
- Apply online—Go to IRS website; search for EIN, apply online

Are there clubs in Pulaski County who already have an EIN?

Yes. Those clubs are Little Maumelle, Brady, Southwest and the Pulaski County Council.

What do we do once we have an EIN number?

Send the name, address and contact person of the club and the EIN number to Betty Oliver boliver@uaex.edu or PO Box 391, Little Rock, AR 72204 to be on the master list of recognized EHC clubs and groups. Also, send a copy to the County Extension Office.

EIN Forms will be distributed at the Pulaski County Board meeting on Monday, August 25, 2008. The meeting begins after the leader training on Identity Theft.

Creative Skill Class



A fabric painting class will be held at the Brady Club Building on Wednesday, October 1, 2008. Learn the techniques of fabric painting by creating snowmen (8"×6") on a dark (black, navy, dark green) t-shirt or sweatshirt. Bring a prewash - without fabric softener- shirt. The cost of the kit is \$7.00. The teacher is Anne Jackson. Pre-register by calling Brenda Forthman at 225-1611.

SEW WITH COTTON

The "Sew with Cotton" contest is a combined effort of AR Farm Bureau and the Cooperative Extension Service. There are three adult categories, three youth categories and a special category for garments made for another person. The cash awards range from First Place - \$400 to Fifth Place - \$50. The deadline for entries is October 31, 2008.

The judging date is Thursday, December 4, 2008, at the Hot Springs Convention Center. Please consider representing Pulaski County in this contest.

Name Tag Orders

It's time to order Extension Homemaker name tags. They are \$5.50 each. The order is due to Treasurer Sue Senn by August 31. Please wear your official name tag to EH meetings!

EHC t-shirts are \$6.00 for S-L and \$8.00 for XL. Orders are due to Joyce Hall by October 1. Her email is JaR_Hall@msn.com

Other promotional items available include EHC pins and officer pins. Contact Betty Oliver (671-2000) or Joyce Hall (455-1077).

Mountain View Tour



Rave reviews of the Arkansas Extension Homemakers Clubs' annual tour to the Ozark Folk Center continue to pour in. Mark your calendar for

November 5, 6 and 7, 2008

The trip includes meals, snacks and lodging and 3 classes.

Transportation is on your own.

A \$50.00 deposit is due ASAP with the balance due on October 1. Make checks payable to AEHC. The cost is \$215 (4 to a room), \$220 (3 to a room), \$235 (2 to a room) and \$300 for a single room.

Send your name, address, city, zip, phone number, e-mail address and room mate(s) to **Marietta Gutierrez**, 1312 Winnebago, North Little Rock, AR 72116 or mariet01@msn.com. Her phone number is (501) 758-2120.

Classes include: Cooking with Herbs; Wood Carving; Wire Tie Jewelry; Brooms; Blacksmith; Polymer Beads; Weaving; Quilting; Leather; Candles; Sewing; and Christmas Nature Decoration. Classes requiring two class periods include: Old World Santa; Decorative Painting; Advance Baskets; Seat Weaving; and Rug Twining.

In the classes, participants will make an item to bring home.

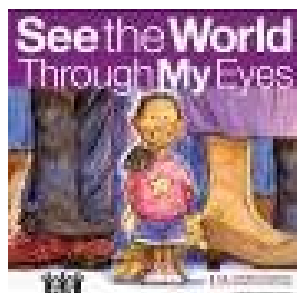
What's new in the County Office?



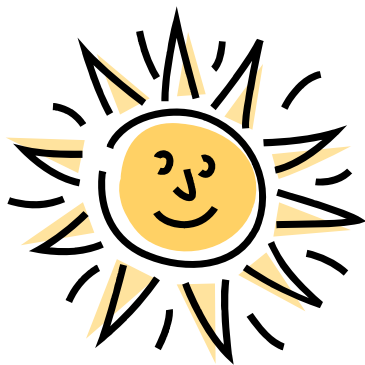
The Personal Journey



The Marriage Garden



Thanks to EHC volunteers who have assisted in the distribution.



Announcements

Monday, September 29
Monday, October 6
Monday, November 3

Fall Council Meeting
Leader Training - Jax
Leader Training – Brady

Members and Guests
Food and Nutrition Leaders
Health & Wellness Leaders

All meetings and activities announced in this newsletter are open to all eligible persons without regard to race, color, national origin, religion, gender, age, disability, marital or veteran status, or any other legally-protected status. Persons with disabilities who require alternative means for communication of program information (large print, audiotapes, etc.) should notify the county Extension office as soon as possible prior to the activity.

Joy L. Buffalo
County Extension Agent-FCS
2901 West Roosevelt Road
Little Rock, AR 72204
(501) 340-6650
jbuffalo@uaex.edu February 2008