



Digging It!

June, 2008

Seeds for Thought...

A Message from the Agent

I recently took a sample of a Hollyhock plant to have it tested at the University of Arkansas Distance Diagnostics lab. This is a free service to Arkansas residents. The county agent can take a digital picture and a live sample and send in either one or both to be tested. The symptoms on the Hollyhock plant were brown and yellow spots on the top side of the leaf blade. On the bottom side, there were orange/brown pustules, which are characteristic signs of a rust infection. The lab results indicated the diseases were Mallow and Hollyhock Rust, caused by the fungus *Puccinia malvacearum*. This fungus has spores that are carried by rain and air to nearby healthy plant parts, resulting in new infections.

Control: The recommendation from the University of Arkansas is to clean up all dead plant debris now and in the fall. This sanitation practice will keep the spores from drifting off and infecting healthy plants. Daconil or a rose spray can be used, but always follow the label's instructions for your safety and the safety of your plant. Spraying a fungicide is designed to keep new leaf blades healthy, but it will not heal existing lesions.

If you would like to learn more about gardening, you can attend the Master Gardeners meeting held on the first Monday of each month. Contact your local extension agent to find out more information on Master Gardeners.

BUTTERFLY FESTIVAL

June 20 and 21 are the dates of the **Butterfly Festival**. Make plans to attend and donate your time for this worthwhile project. The Master Gardeners will be running a butterfly conservatory in Paris. On Mt. Magazine, Master Gardeners will conduct the guided tours of the butterfly garden at the Visitor's Center and have a plant sale near the Pavilion. We need four people for each tour and at least four selling plants. We are providing parsley plants for the crafts for children. They will be learning to make flower pots from old newspapers and will plant a parsley plant in it to take home with them. If you have children or grandchildren, this is a **MUST ATTEND** event. It is located in the Pavilion, where the state employees always have an educational, interesting display. I have noticed, in past years, that the parents become as involved as the children in the Butterfly Festival.

EP



Logan County
Master Gardener
Contributor:
Elizabeth Patty

Booneville Office

#24 Courthouse
Booneville, AR 72927
Phone: (479) 675-2787
Fax: (479) 675-4086
E-Mail: loganb@uaex.edu

Paris Office

#15 Courthouse
Paris, AR 72855
Phone: (479) 963-2360
Fax: (479) 963-2360
E-Mail: loganp@uaex.edu

David Moseley
County Extension Agent –
4-H / Agriculture

This newsletter is devoted to BUTTERFLIES and will hopefully increase our knowledge...



PLANTING A BUTTERFLY GARDEN



- Location, location, location...A butterfly garden doesn't require much space, but butterflies and plants will need a spot that gets at least six hours of sun each day.

- Give 'em a break...A wind break, that is. Make sure the planting area is near trees, shrubs or a building. This offers these gentle creatures some protection from wind. It also keeps taller plants from blowing over.

- Plant a variety of flowers. Offer both butterflies and caterpillars a tempting buffet. In doing so, you will attract more species to your yard.

- No space for a large garden? Plant some of the shorter butterfly favorites, like marigolds and dwarf zinnias in a window box or container on your patio, porch or balcony.

- Bedding plants ready to bloom will lure fluttering friends in no time.



- Can the chemicals.

Avoid using insecticides on your plants. Products designed to eliminate harmful insects will kill butterflies and caterpillars, too.

- Water, water everywhere.

Puddles or other damp soil areas attract male butterflies that collect salts and other minerals needed for mating. The common term for this behavior is "puddling." No natural puddles in your garden? Sink a shallow container or bucket in the ground, add sand and moisten — you have an instant butterfly watering hole.

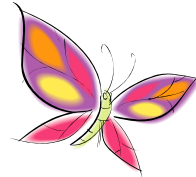


- Heat things up. Place dark stones in your garden to absorb heat and provide a place for the butterflies to warm their wings. This gives you a fantastic

chance to see these winged wonders up close and bask in the joy of creating your own butterfly haven.
EP

FEEDING TIME

A complete butterfly garden needs two types of plants — "host plants" that caterpillars feed on, and "nectar plants" for the adult butterflies. Here are some common plants that will attract butterflies to your yard:



PLANTS FOR CATERPILLARS

Clover

Parsley

Dill

Fennel

Hollyhock

Milkweed

Nettle

Passionflower

Willow

Asters

Bee Balm

Black-eyed Susans



PLANTS FOR BUTTERFLIES

Butterfly bush

Butterfly weed

Cosmos

Goldenrod

Lantana

Lavender

Marigolds

Mexican Sunflower

Pentas

Phlox

Purple Coneflowers

Salvia

Zinnias

PLANTS THAT ATTRACT BIRDS AND BUTTERFLIES

Bird (B), Hummingbird (HB), Butterfly (BT), Butterfly Larvae (L)

TREES

Beech (Fagus) B

Birch (Betula) BT, L

Black Cherry B, L

Black Gum B

Crabapple B, L

Dogwood B

Elm L

Fir B

Hawthorn B, L

Hickory B, L

Holly B

Mulberry B

Willow L

SHRUBS

Azelia HB, BT

Blueberry B

Blue Mist Spirea HB, BT

Butterfly Bush HB, BT

Firethorn B

Holly B

Juniper B, L

Lilac BT

Mock Orange BT

Serviceberry B

Spice Bush B

Spirea BT

Sumac B

Virurnum B, BT

Weigela HB, BT

VINES

American Bittersweet	B
Grape	B
Honeysuckle Vines	B, HB, BT
Trumpet Vine	B, HB, BT
Virginia Creeper	B

PERENNIALS

Aster	HB, BT
Bee Balm (Monarda)	HB, BT
Butterfly Weed	BT, L
Cardinal Flower	HB, BT
Columbine	HB, BT
Coneflower (Echinacea)	B, HB, BT
Delphinium	HB, BT
Lupine	HB, BT
Penstemon	HB, BT
Phlox	HB, BT
Salvia	HB, BT

ANNUALS

Cosmos	BT	Calendula	BT, L
Dill	L	Salvia	HB, BT
Fuchsia	HB, BT	Snapdragon	BT, L
Licorice Vine	L	Stock	BT
Lobelia	HB, BT	Sunflower	B, HB, BT
Marigold	BT	Verbena	HB, BT
Parsley	L	Zinnias	BT

EP



WATER

Keep plenty of fresh water for the birds. Butterflies need mud puddles. They need the nutrients in mud to sustain life. I use an old skillet, put some mud in it and a few small rocks placed in the sun. Add water a couple of times each day.



Hummingbirds appreciate a mist shower. *EP*

JUST A REMINDER

We need plants and more plants for the sale. Look at the list below and see if you can get some potted up for the sale. Label and price plants, please. If you need to have your plants transported up to the mountain, please have them at my house (Elizabeth Patty) no later than noon on Thursday prior to the plant sale. We will be setting them up on Thursday evening. If you don't have any on the list, bring any kind of plants. We have the following categories: trees, shrubs, houseplants, perennials, annuals, vines,

ground cover, and herbs. You may call me at home during the day between 8:30 a.m. and 12:30 p.m. and in the evening between 6:30 p.m. and 9 p.m. *EP*

Upcoming Events

Going Green with Fruit: Fruit Station Field Day in Clarksville on Tuesday, June 24. There will also be a fruit dessert contest for youth 10 – 19 and adults. There is no entry fee; however, pre-registration for the dessert contest is required by Friday, June 20. Contact the Extension office to pre-register. See insert for more information.

Tomato Workshop: June 28 at the Winthrop Rockefeller Institute.

Adult Natural History Workshops Native Tree ID, Arkansas Mushrooms and Edible Wild Plants: October 4 and 5 – Ferncliff Camp in Western Pulaski County.

Southern Region Master Gardener Conference: June 18 – 21 at Oklahoma City.

With Deepest Sympathy

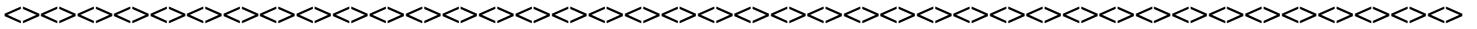
We, the Master Gardeners of Logan County and Extension staff, want to extend to the family of Hilda Hertlein, our deepest sympathy. Hilda was a long time member of the Master Gardeners and will truly be missed. *EP*



The Logan County Master Gardeners and the Extension staff would like to express our sympathy to Elizabeth Patty and her family in the recent loss of her husband.



All meetings and activities announced in this newsletter are open to all eligible persons regardless of race, color, national origin, religion, gender, age, disability, marital or veteran status, or any other legally protected status. Persons with disabilities who require alternative means for communications of program information (large print, audiotapes, etc.) should notify the county Extension office as soon as possible prior to the activity.



June	July	August
<ul style="list-style-type: none">● Basil● Gourds● Popcorn● Southern Peas● Collards● Pumpkins● Winter Squash● Summer Squash● Cucumbers● Sweet Potatoes● Sweet Corn● Pole Beans	<ul style="list-style-type: none">● Basil● Pak Choi● Bok Choi● Broccoli● Cabbage● Snap Beans● Irish Potatoes● Collards● Tomatoes - Fall● Southern Peas● Cucumbers● Pumpkins● Winter Squash● Summer Squash	<ul style="list-style-type: none">● Basil● Lettuce● Kale● Mustard● Parsnips● Carrots● Beets● Chinese Cabbage● Cauliflower● Broccoli, Cabbage● Cucumbers● Collards, Squash● Snap Beans● Southern Peas

