

# BLUE LETTER

The University of Arkansas Cooperative Extension Service Monthly Letter

No. 3713 • September 2011

## FROM THE DIRECTOR

You received an e-mail recently from Drs. Mark Cochran, Rick Roeder and me acknowledging the support many of you provided in assuring a successful Rice Expo at the Rice Research and Extension Center near Stuttgart, Thursday, August 4.

Our road toward the successful Rice Expo began when Chuck Wilson, interim director of the Rice Research and Extension Center, laid down the marker. We were going to have 1,000 or more participants, a figure greater than previous field days, and many of you fell in to make sure we reached that goal.

Chuck sought input from rice producers on how we could achieve the goal, and they suggested the field day, eventually named Rice Expo, include activities for their spouses, children and grandchildren.

Having asked for ideas and taking advantage of a successful Extension model used by county agents and specialists every day, the planning committee set out to make certain there were six tours and a wide variety of events, activities, demonstrations and booths.

Participants watched cooking demonstrations, joined in StrongWomen exercises, learned about landscape plants that can take the heat.

They visited displays and booths in the Family Life/FCS tent. There they tasted foods prepared with rice, and learned about money management, healthy homes, marriage and parenting and skin cancer prevention.

In the 4-H and Youth tent they learned about 4-H opportunities and explored the miniature world seen through microscopes.

There was a climbing wall, agriculture equipment demonstrations, the Arkansas Game and Fish trailer, beginning archery and an archery shoot, instructions about ATV safety, a BB shoot, laser hunting simulator and a skeet shoot in addition to other fun and educational activities.

It was an extremely hot day, but I was particularly proud of the energy and drive I saw so many of you invest in making certain the Rice Expo was highly successful. Thank you for what you accomplish daily to enrich the lives of Arkansans statewide

– Tony Windham

## Revised logo for the University of Arkansas System Division of Agriculture is approved



The revised logo for the University of Arkansas System Division of Agriculture has been approved. To download, go to <http://division.uaex.edu/Logos/default.htm>.

A revised *Standards of Usage Manual* will be updated soon.



**DIVISION OF AGRICULTURE**  
RESEARCH & EXTENSION  
*University of Arkansas System*

University of Arkansas,  
United States Department of  
Agriculture, and County  
Governments Cooperating

## Inside:

- USDA Researcher Appointed Animal Science Department Head at University of Arkansas
- Community Service Award Winner Represents EHC Well
- Division and Partners Hold First Statewide Agritourism Conference
- StrongWomen Founder Makes Cross-Country Tour: Arkansas Stop Oct. 12-15
- Division Launches Discovery Farm Program
- Community Development Achievement Award Presented to Mark Peterson
- 4-H Seafood Cooking Team Competes
- Save the Date
- Extension in Action!
- Meet the New Employees
- Benefits Corner
- Information Technology Update: *Managing Your E-mail Quota*
- Grants and Contracts
- Personnel Changes

DR. TONY WINDHAM  
Associate Vice President  
for Agriculture-Extension



**Dr. Michael L. Looper, head of the University of Arkansas Department of Animal Science.**

## USDA researcher appointed animal science department head at University of Arkansas

Michael L. Looper, a research animal scientist at the USDA Dale Bumpers Small Farms Research Center in Booneville, has been appointed head of the University of Arkansas department of animal science, effective Sept. 1.

Looper will coordinate animal science research and Extension programs, along with Tom Troxel, associate department head for Extension. Looper will coordinate academic programs in animal science in the Dale Bumpers College of Agricultural, Food and Life Sciences.

Mark J. Cochran, the U of A System's vice president for agriculture, said, "I am excited that Dr. Looper is joining the leadership team for our teaching, research and extension programs in support of the state's livestock industry."

"Arkansas has some 1.8 million head of beef and dairy cattle on about 28,000 farms with more than 5.5 million acres of pasture and hay fields," Cochran said. "Dr. Looper has the experience and dedication to help lead our outstanding faculty in meeting the needs of Arkansas beef and dairy producers, locally important swine enterprises and horse enthusiasts."

Michael E. Vayda, dean of Bumpers College, said, "Dr. Looper has excelled as a scientist and teacher and will be a great role model as well as an effective leader."

Looper was raised on a fifth-generation beef and dairy cattle farm in Arkansas. He earned B.S. and M.S. degrees in animal science from the University of Arkansas and a Ph.D. from Oklahoma State University. In 1999 he joined the faculty of New Mexico State University as an extension dairy specialist and assistant professor.

Since 2002, Looper has served as a USDA Agricultural Research Service animal scientist at the Dale Bumpers Small Farms Research Center. He served as lead scientist of the Food Animal Production Program, responsible for oversight and accountability for the program's approximately \$1 million budget.

Looper has mentored numerous graduate students. He also trained graduate students at New Mexico State University. He served as adjunct faculty at the University of Arkansas, Fort Smith, where he taught courses in anatomy and physiology and biological sciences.

Looper has authored or co-authored more than 150 non-abstract, scientific publications. He has received numerous awards for research and teaching, including the Presidential Early Career Award for Scientists and Engineers, the highest honor awarded in that field by the U.S. government. ■

## Community service award winner represents EHC well

Phyllis Pipkin was honored for outstanding service to her community and state at the University of Central Arkansas in Conway, Friday, July 22, 2011, at the 34th Annual Community Service Awards ceremony.

Phyllis is the Arkansas Extension Homemakers Council state president and a member of Designing Women EHC Club of Garland County. Garland County EHC will receive \$500 in her name for educational projects.

Her award was for work done through Garland County EHC, AEHC, Lake Hamilton Cumberland Presbyterian Church and the UAMS COACHES program.

The event was televised by KARK TV on August 4 at 6:30 p.m. ■



Phyllis Pipkin honored for outstanding service to her community.

## Division and partners hold first statewide Agritourism Conference

On August 18-19, the Arkansas Agritourism Initiative hosted a conference to help strengthen agritourism in Arkansas. Participants included current and potential agritourism operators, county extension agents, community leaders and industry service providers.

In addition to the Division of Agriculture, initiative partners include Arkansas Farm Bureau, Arkansas Department of Parks and Tourism, Arkansas Agriculture Department, National Agricultural Law Center and Winthrop Rockefeller Institute.

Stacey McCullough, Community and Economic Development, chaired the conference committee. Other Division committee members included Ron Rainey, Becky McPeake, Jeff Miller, Dan Rainey and Harrison Pittman. Ples Spradley and Kim Magee were presenters.

Topics included marketing, regulation, business planning, liability and financing. The conference also featured “Best Web Site” and “Best Facebook Page” contests. Marla Johnson-Norris, CEO of Aristotle, provided feedback on how participants can more effectively market online.

Feedback from the conference was overwhelmingly positive. One participant wrote, “This was BY FAR one of the best conferences I have attended. I don’t ordinarily take notes, and I have PAGES of notes. The conference could easily be extended to a third day.” Another said it was “a great program, well organized, with excellent speakers who interacted well with participants.” ■



**Representatives Bruce Westerman (Dist. 30) and Jeremy Gillam (Dist. 49) update participants about legislative action related to agritourism in Arkansas.**



**Dallas and Katie Peebles won the award for “Best Web Site” for [www.peeblesfarm.com](http://www.peeblesfarm.com).**



**Ples Spradley shares what’s worked and what hasn’t with his u-pick operation at Spradley Berry Farm.**



## StrongWomen founder makes cross-country tour: Arkansas stop Oct. 12-15

Miriam Nelson, founder of the StrongWomen initiative that’s offered through Family and Consumer Sciences, will be making stops in Camden and Hot Springs in October as part of a cross-country tour.

“Nelson is taking nine weeks to drive across our nation, bringing home the message that we are facing a health crisis with more than two-thirds of our population either overweight or obese,” said LaVona Traywick, assistant professor-gerontology.

Nelson will be promoting her new book, “The Social Network Diet: Change Yourself, Change the World.”

Nelson will work closely with StrongWomen ambassadors in Arkansas and seven other states to establish Change Clubs – groups of women who come together to

target action steps, large and small, to change the food and physical activity environment in their own communities.

In Arkansas, a Change Club event will be held in Camden, Oct. 12-14, and wind up Nelson’s Arkansas visit with a StrongWomen and Men rally at the Arlington Hotel in Hot Springs, Oct. 15.

Nelson and StrongWomen co-creator Rebecca Seguin will lead attendees in a group exercise at 10 a.m., and Nelson will serve as keynote speaker for lunch in the Arlington ballroom. Nelson will be autographing her book, which will be free to the first 250 who register online after Sept. 1 at [www.regonline.com/strongwomenrally](http://www.regonline.com/strongwomenrally).

For more information, contact LaVona Traywick, [ltraywick@uaex.edu](mailto:ltraywick@uaex.edu) or 671-2027. ■

## Division launches Discovery Farm Program

Discovery Farms are privately owned farms that have volunteered to help with on-farm research, verification and demonstration regarding farming's impact on the environment and natural resource sustainability. The research projects will be led by Dr. Mike Daniels, Extension water quality and nutrition management, and Dr. Andrew Sharpley, professor, crop, soil and environmental sciences.

There are five Discovery Farms: a poultry farm in Washington County, a beef cattle operation in Conway County, a rice-soybean and corn operation in Arkansas County and two adjacent rice-soybean operations in Cross County.

"We are collecting water use and water quality data from the farms using 13 automated water monitoring stations," says Daniels.

"At Stuttgart on Terry Dabbs' farm, we are monitoring three rice fields, one corn field and runoff from 1,200 acres of cropland since Terry catches all his runoff with tail-water recovery structures," Daniels says. "In Cross County, we are monitoring water inflow and outflow on the Clements farm in a 65-acre rice field and a soybean field on the Mike Wood farm."

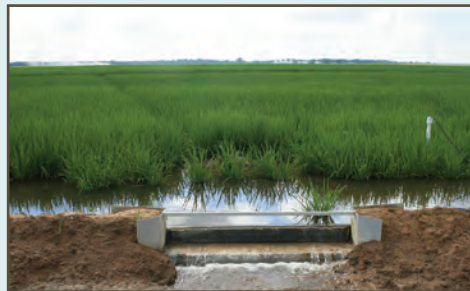


**Water control structure for collecting runoff in pasture at Elkins.**

On the Jeff Marley poultry farm in Washington County, the team is monitoring runoff from the area surrounding the production houses and evaluating the effects of a pond on an ungrazed pasture at removing nutrients and sediment from runoff. At the beef cattle operation on the Willow Bend farm in Conway County, the team is monitoring the effect of cattle crossings and a wetland at reducing nutrient and sediment loading. ■



**Pearl Daniel programs automated water quality sampler.**



**Weir for collecting runoff water from rice field.**



**Runoff from pasture flowing underneath cattle crossing.**

## Community Development Achievement Award presented to Mark Peterson



Dr. Mark Peterson, professor in community development, was presented with the Community Development Achievement Award for his work in Breakthrough Solutions at the Community Development Society International Conference, July 28-31 in Boise, Idaho.

Gisele Hamm, CDS awards committee chair, said "Breakthrough Solutions is considered one of the most cutting-edge programs in the field because it incorporates asset-based work and innovative tools to break beyond boundaries."

Breakthrough Solutions is featured in a chapter in the Community Development Handbook used for professional certification, which was published by the Community Development Council for use in the five Community Development Institutes in the U.S.

Peterson has been invited to be a part of an Innovative Programs Initiative, sponsored by the North Central Center for Rural Development, Michigan State University. ■

## 4-H seafood cooking team competes

Move over Mario Batali and Emeril Lagasse. We have some new aspiring chefs in Arkansas. Pike County's 4-H team of Katelyn Kirkham and Morgan Watson won third place in the regional 4-H Seafood Cooking Competition held in New Orleans, Louisiana, on August 8. Katelyn and Morgan were accompanied by Robbie McKinnon, family and consumer sciences agent, University of Arkansas, for Pike County and LaVetta Perkins of Hempstead County.

Katelyn and Morgan prepared Spicy Shrimp Spectacular to receive high points on their dish and presentation. Judges were Irvin Jackson from Mississippi,



**4-H SEAFOOD COMPETITION:** Pike County 4-H members Morgan Watson and Katelyn Kirkham present information about their recipe "Spicy Shrimp Spectacular" to the judges at the 4-H Regional Seafood Cooking Competition. Judges pictured are Irvin Jackson of Mississippi, Mike Strain of Louisiana, Jennifer Sirangelo from national 4-H and Stephen Barr from national 4-H.

## Save the Date!

**U of A**  
DIVISION OF AGRICULTURE  
RESEARCH & EXTENSION  
University of Arkansas System

*Division Awards Luncheon*  
JANUARY 6, 2012 • 11:30 a.m. • Crowne Plaza Hotel • Little Rock

Mike Strain from Louisiana, Jennifer Sirangelo and Stephen Barr from national 4-H.

The team comes from the Healthy Kids in the Kitchen 4-H club where they, along with other teens from Delight High School, worked with the younger 4-H members to prepare three recipes during each of their after school meetings. They also participated in the SNAP-Ed program that met with adults from the community each month for Healthy Cooking. Lois Hunter Wesson is their 4-H leader. Katelyn serves as club president and Morgan serves as club secretary.

Both girls have their ServSafe certificates, evidence of their safe food handling skills. Both are employed in the food industry with Sonic. Katelyn works in Murfreesboro, and Morgan works in Gurdon. The team is appreciative of the hair nets and dishwashing sanitizer furnished by Connie Glass of the Murfreesboro Sonic. ■

## Extension IN Action!

**Faulkner County at Rice Expo:** Front, L to R: Hank Chaney, county Extension agent - staff chair; Andrew Hodge; Christina Monday; Chase Tucker; Leigh Helms, Faulkner County CEA 4-H/FCS; Jansen Riddle; Austin Brewer. Back, L to R: James Schaefers and Travis Burchfield.



**Arkansas 4-H Tech Team Takes Third Place at Missouri 4-H FilmFest:** The Arkansas 4-H Tech Team traveled to Branson, July 31, for the first ever 4-H Missouri FilmFest where they took third place with their documentary on rocketry. They also attended works by professional film and video producers.



**FCS Agents Participate in Tai Chi Training in Jacksonville.**

# Meet the *new* employees

## **Cheryl Gibbins**

Fiscal Support Specialist  
Credit Union



### **What's your background?**

I grew up in the Little Rock area and graduated from J.A. Fair High School. I attended UALR for three semesters. I have worked at Alltel Communications, U-Haul of Arkansas and James Electric, Inc., as a bookkeeper.

### **What knowledge, skills and/or experience are you bringing to Extension?**

I have worked in accounting in some capacity for 19 years, and I have considerable customer service experience, both of which I hope to use in the Credit Union.

### **What are 1 or 2 things you would like your colleagues to know about you?**

I am the proud parent of a 14-year-old son, and the majority of my time and energy are devoted to him. I am a full-time student working toward a Bachelor's in Business Administration.

### **What would you like to accomplish your first year at Extension?**

I hope to get to know everyone and gain a new set of skills, as this is my first experience working in a financial institution.

### **What brought you to Extension? What was it about Extension that you value?**

I was marginally aware of Extension prior to my application for employment; however, I have learned that Extension is responsible for a great many programs that help people in communities statewide.

### **What are your interests or hobbies outside work?**

When I am not working, I attend online classes, spend time with my son and read. I also keep in touch with my family through social networking, and I enjoy working on the landscaping around my home. ■

## **Bill Gu**

Project/Program Director  
Information Technology



### **What's your background?**

Nineteen years ago, I came to the states from China and earned two master degrees, one from the University of Missouri at Rolla, renamed Missouri Science and Technology University, and one from Case Western Reserve University. Before I came to Extension, I worked as database administrator for Administrative Office of Courts, Supreme Court of Arkansas and University of Arkansas at Little Rock.

### **What knowledge, skills and/or experience are you bringing to Extension?**

I have 15 years experience with Oracle products, such as Oracle RDBMS, Oracle Forms, Oracle Reports and more than 5 years on Banner. I started working on Oracle as Oracle backup DBA, EDI engineer, database developer, Banner security administrator and Oracle database administrator.

### **What are 1 or 2 things you would like your colleagues to know about you?**

I am a very careful person who enjoys focusing on technical issues.

### **What would you like to accomplish your first year at Extension?**

I would like to rebuild the whole database and Banner under new environment and make Banner catch up with the latest updates. I hope to make UAEX Banner users more comfortable with Banner by the end of the project.

### **What brought you to Extension? What was it about Extension that you value?**

Just a good match brought me here. I feel comfortable working on Banner.

### **What are your interests or hobbies outside work?**

Traveling and climbing mountains are my favorites. ■

## **Ross McCartney**

Videographer  
Communications and Marketing



### **What's your background?**

I was born in Springfield, Massachusetts, and grew up in Massachusetts, South Dakota, Nebraska, Arkansas and North Carolina. I attended high school in the Asheville School in Asheville, North Carolina, and studied Film and Television at Savannah College of Art & Design, Savannah, Georgia. My first major job out of school was with Walmart, where I was promoted to associate producer, producing live television and video.

### **What knowledge, skills and/or experience are you bringing to Extension?**

I have experience in graphic design, sound, motion graphics and media production, and I hope my expertise will be a contribution to the Extension team.

### **What are 1 or 2 things you would like your colleagues to know about you?**

I am a league certified instructor with the League of American Bicyclists.

### **What would you like to accomplish your first year at Extension?**

I hope to streamline the podcast process and increase the overall production value. By improving in these two areas, instead of growers needing to watch the podcasts, my hope is they will want to watch them.

### **What brought you to Extension? What was it about Extension that you value?**

I am here to help soybean specialists and county agents provide producers the information they need to increase the bottom line. Using what I am good at to help others, well, that just seems common sense to me.

### **What are your interests or hobbies outside work?**

I have several hobbies, including bicycling, painting, urban treks, hiking, camping, poker, singing, acting (community theatre) and exploring. Video production is probably my favorite hobby. ■

## **Kris Rutherford**

S.P. Pre-Award Grants Officer



### **What's your background?**

I am a hybrid, a native Texan who split my time between the North and South growing up – spending my winters in Maine and summers in Texas. I have a Recreation Administration degree from Arkansas Tech and a Master of Agriculture from Colorado State. I started my career as a planner for Arkansas State Parks then moved to the Arkansas Game and Fish Commission where I served as federal aid coordinator and assistant chief of education.

### **What knowledge, skills and/or experience are you bringing to Extension?**

I have 22 years of experience in natural resource management and education. During that time, I have written hundreds of grant and project proposals that should serve me well in my new position as pre-award grants officer.

### **What are 1 or 2 things you would like your colleagues to know about you?**

My wife Karen and I have lived in Maumelle since 1991 and have three kids, Kristianna (19), Klayton (17) and Kolton (13). Yes, we're a 5K family.

### **What would you like to accomplish your first year at Extension?**

Aside from learning the ins-and outs of the Extension grants process, I'd like to develop a lot of relationships with the folks with whom I'll be working.

### **What brought you to Extension? What was it about Extension that you value?**

Variety. The opportunity to move from a career focused exclusively on natural resources to one that is concerned with a wide range of subject matter was something I couldn't pass up. I've always been more of a generalist than a specialist.

### **What are your interests or hobbies outside work?**

I golf rather poorly, fish with little success and cheer on a number of sports teams that have won virtually nothing in the last 15 years. I also write youth sports novels on the side. ■

### **Brittany Scott**

County Extension Agent - 4-H  
Craighead County



#### **What's your background?**

I graduated from Stephen F. Austin State University in Nacogdoches, Texas, with a bachelor's degree in Animal Science in 2008, and from LSU in May 2011 with a Master's in Animal Science specializing in domestic animal reproductive physiology.

#### **What knowledge, skills and/or experience are you bringing to Extension?**

I have a strong background in forestry, wildlife, livestock, horses and shooting sports.

#### **What are 1 or 2 things you would like your colleagues to know about you?**

I was born and raised in Texas and am a huge LSU fan GEAUX tigers!!

#### **What would you like to accomplish your first year at Extension?**

I would like to revive clubs in our county and recruit and build based on members' interests.

#### **What brought you to Extension? What was it about Extension that you value?**

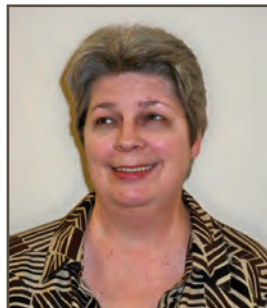
I applied for this position because when I was growing up I received a lot of positive support from my family and members in the community to pursue my interests. I definitely could not have achieved all that I have without them. I hope to return this support to local youth.

#### **What are your interests or hobbies outside work?**

I love being outside doing pretty much anything. I also enjoy riding horses and would love to start roping. ■

### **Reta Smith**

Administrative Specialist  
Craighead County



#### **What's your background?**

I was born and raised in Pocahontas, Arkansas, and am a graduate of ASU here in Jonesboro.

#### **What knowledge, skills and/or experience are you bringing to Extension?**

I have worked in an office setting my entire career, which has run the gamut from the public school system in Maynard, Arkansas, to working for the vice president of finance at the Solo Cup Company in Illinois. Most recently, I worked for five years as a church secretary here in Jonesboro.

#### **What are 1 or 2 things you would like your colleagues to know about you?**

I am a dedicated employee and one that enjoys working in an atmosphere of cooperation between co-workers.

#### **What would you like to accomplish your first year at Extension?**

During my first year at extension, I want to learn all that I can about it's many faces.

#### **What brought you to Extension? What was it about Extension that you value?**

I already know that it involves much more than I ever dreamed.

#### **What are your interests or hobbies outside work?**

I enjoy reading and cooking in my spare time. ■

### **Laura Anne Warren**

SNAP-Ed Program Assistant  
Pulaski County

#### **What's your background?**

I grew up in Saline County and the Little Rock area. I have a B.S. degree in Liberal Arts from UALR.

#### **What knowledge, skills and/or experience are you bringing to Extension?**

I have been a Master Gardener for the past 13 years, and I spent the last eight teaching preschool.

#### **What are 1 or 2 things you would like your colleagues to know about you?**

I am teaching nutrition and gardening through a pilot program called Love Your School at Western Hills Elementary and Martin Luther King, Jr., Elementary.

*(continued on next page)*

## What would you like to accomplish your first year at Extension?

I would like to see measurable improvements in the attitudes and lives of children and parents about nutrition, gardening and fitness.

## What brought you to Extension? What was it about Extension that you value?

It provides me an opportunity to work with gardening in the school setting and work in an environment where making positive changes in the lives of children and families happens every day.

## What are your interests or hobbies outside work?

I am actively involved in Scouting with Troop 27, and I enjoy spending time with my family. ■

# BENEFITS CORNER

## Roth 403(b)

Effective September 1 you now have another choice on how to save for your retirement. To learn more about the new Roth 403(b) option, you may contact TIAA-CREF at [www.tiaa-cref.org](http://www.tiaa-cref.org) or 800-842-2776; Fidelity at [www.fidelity.com/atwork/roth](http://www.fidelity.com/atwork/roth) or 800-343-0860 for additional information.

## Unmatched 403(b)

Employees in a non-benefits eligible position (less than 50% appointment) are eligible to participate in "employee only" contributions to retirement through a Tax Deferred Annuity (TDA). You can set aside money, tax-deferred, to save for retirement. All contributions are voluntary and would not be matched by the U of A. Participation in the TDA Plan is offered through TIAA-CREF and/or Fidelity.

## Information Technology update

### Managing your e-mail quota

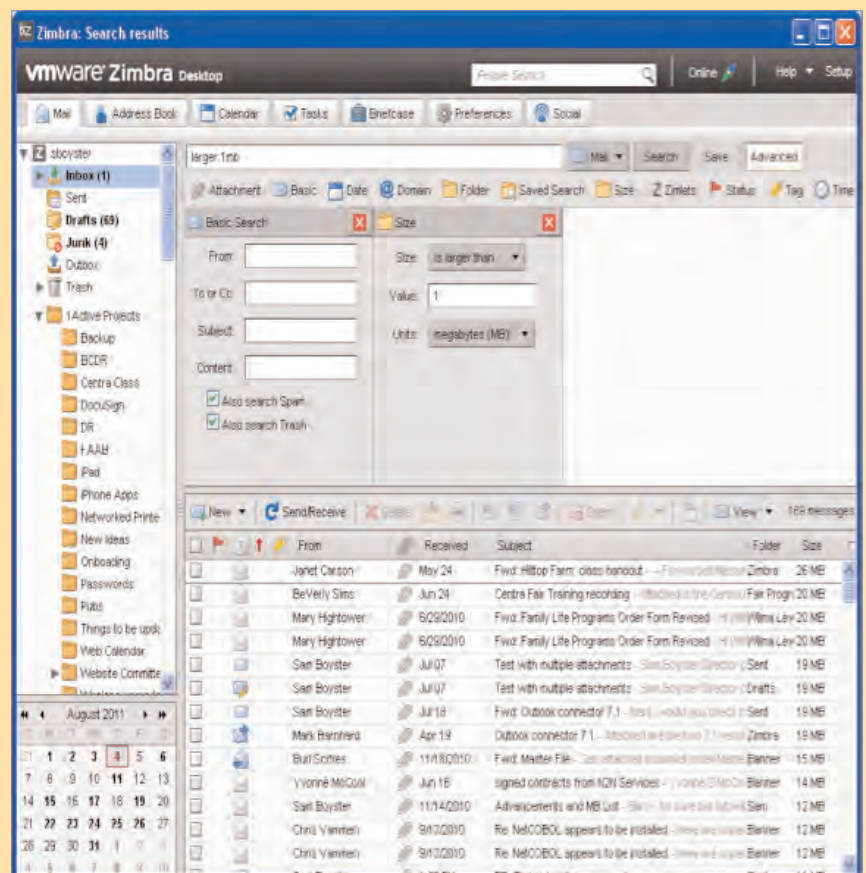
Even with the additional storage available for e-mail, you may find yourself getting an e-mail quota warning if you reach 90% of your allocation. That's usually sufficient time to address the situation before your account is completely full.

Make sure you've emptied your 'Trash' and 'Spam' folders.

Second, check for the largest e-mails so that you can delete them or save the attachments to your computer. Many times it's not the e-mail itself but rather the attachments that consume so much space.

If you click on the 'Advanced' search option, one of the icons at the top, toward the center, is labeled 'Size.' Click on it and you should see an option to search based on size. In the following example, I've chosen to search for anything larger than 1MB. It populated my search box with 'larger:1mb.' Under the results it returned, click on the 'Size' column to sort in descending order. The list represents my 'largest' e-mail messages.

Additional options include creating local folders or using Microsoft Outlook to automatically archive older messages. To learn more about these options, please contact the Call Center at 501-671-2255. ■



# Grants and contracts

## for Month Ending July 31, 2011

Project Title	Award Amount	Principal Investigator	Granting Agency
Arkansas 2011 Flood Recovery Project	\$ 60,000	Deborah Tootle	National Institute of Food and Agriculture
PTA for Small Business Firms	278,007	Willie Price	Department of Defense
Best Care	166,052	James Marshall	Arkansas Department of Human Services
Best Care Connected	54,367	James Marshall	Arkansas Department of Human Services
Guiding Children Successfully	123,560	Wally Goddard	Arkansas Department of Human Services
Arkansas 4-H Afterschool	82,920	Ida Collier	Arkansas Department of Human Services
Military Community, Family and Youth Extension	46,761	Maureen Rose	Purdue University
Diabetes Communities of Practice	7,740	Becky McPeake	Regents of New Mexico State University
Enhancement of Riparian Buffer Inventorying Algorithm for Field Use	98,059	Dharmendra Saraswat	AR Natural Resources Commission
Stewardship of the National Hydrography Dataset in the State of Arkansas	10,000	Dharmendra Saraswat	AR Dept of Environmental Quality
Field Trial Agreement	15,000	Gus Lorenz	Bayer Crop Science LP
Twinlink Performance compared to Bollgard II Across the Cotton Belt	10,000	Scott Akin	Bayer Crop Science LP
Evaluation of Cotton Yield Loss Caused by Two-Spotted Spider Mites AR III	6,600	Glenn Studebaker	Cotton Incorporated
Evaluation of Delta Geographic Concentration Project	20,000	Deborah Tootle	Mississippi State University
Field Trial Agreement	12,000	Gus Lorenz	Pioneer
<b>TOTAL</b>	<b>\$ 208,706</b>		

## Personnel changes

Please welcome the following:

**Dianna L. Bowen**

County Extension Agent - Family and Consumer Sciences, Lonoke County, effective August 16, 2011.

**Morgan L. Canter**

Program Assistant, White County, effective, July 5, 2011.

**Cheryl L. Gibbins**

Fiscal Support Specialist, Credit Union, effective August 11, 2011.

**Cheryl K. Johnson**

Program Assistant - EFNEP, Pulaski County, effective July 18, 2011.

**Chunshan Gu**

Project/Program Director, Office of Information Technology, effective August 1, 2011.

**Kristopher P. Rutherford**

Pre-Award Grants Officer, Office of Sponsored Programs, effective August 8, 2011.

**Heather M. Day**

County Extension Agent - Family and Consumer Sciences, Desha County, effective August 16, 2011.

**Ross D. McCartney**

Extension Videographer, Office of Communications and Marketing, effective August 8, 2011.

Extension says goodbye to:

**Patrick S. Burgess**

County Extension Agent - Interim Staff Chair, Office of Ozark District, effective August 15, 2011.

**Meegan A. Houston**

Administrative Specialist, Jefferson County, effective August 11, 2011.

**David O. Moseley**

County Extension Agent - 4-H - Agriculture, Logan County-Booneville, effective July 15, 2011.

**Jane A. Mowry**

Administrative Support Supervisor, Marion County, effective July 29, 2011.

**Heather M. Runyan**

County Extension Agent - Family and Consumer Sciences, Perry County, effective August 12, 2011.

**Amanda C. Watson**

Program Assistant, Columbia County, effective July 29, 2011.

The Arkansas Cooperative Extension Service offers its programs to all eligible persons regardless of race, color, national origin, religion, gender, age, disability, marital or veteran status, or any other legally protected status, and is an Affirmative Action/Equal Opportunity Employer.