

Crop, Situation, and Active Chemical Per Broadcast Acre	Weeds Controlled	Formulated Material Per Broadcast Acre	Time of Application	Method of Application and Precautions
imazaquin @ 0.092 to 0.125 lb/A	Cocklebur, pitted morningglory, spurge, prickly sida, pigweed and smartweed. Sicklepod if followed by a postemergence application.	Scepter 70 DF 2.1 to 2.8 oz/A. Use low rate on sandy soils. NOTE: Use either following an application of Treflan or Prowl or tank mixed with a labeled rate of Dual or Lasso.	At planting. Apply on band to reduce cost.	Rainfall within 3 to 5 days required for activation. Not recommended for later planted soybeans due to poor probability of rainfall. If using for cocklebur control in later plantings, use postemergence. Severe soybean injury can occur on soils with poor internal drainage under prolonged wet conditions at emergence. Follow same recropping intervals outlined for Scepter ppi.
sulfentrazone + metribuzin @ 0.66 to 0.11 + 0.96 to 0.16 lb/A	Broadleaf weeds.	Authority MTZ 6 to 10 oz/A.	No later than three days after planting.	Make sure seed furrow is closed.
chlorimuron/metribuzin @ 0.25 to 0.5 lb/A	Cocklebur, pitted, entireleaf and ivyleaf morningglory, spurge, and hemp sesbania. Sicklepod if followed by Classic post-emergence.	Canopy 75 DG 0.375 to 0.67 lb/A. Use either following Treflan or Prowl or tank mixed with a labeled rate of Dual or Lasso.	At planting. Apply on band to reduce cost.	Rainfall required for activation. Not recommended for later planted soybeans due to poor probability of rainfall. Severe soybean injury can occur on soils with poor internal drainage under prolonged wet conditions at emergence. Follow same recropping intervals outlined for Canopy ppi. Do not use on heavy soils with pH above 7.0.
flumetsulam @ 0.05 to 0.066 lb/A	Cocklebur, horseweed, smooth pigweed, eclipta, velvetleaf, spurge, and prickly sida. Suppression of morningglories. Sicklepod if followed by Classic.	Python 80 WDG 1 to 1.33 oz/A + labeled rate of Dual or other preemergence grass herbicide.	At planting.	Rainfall required for activation. Control of cocklebur, morningglory, and sicklepod may be enhanced by using higher end of rate range for each soil textural class. Do not plant cotton for 18 months or sorghum for 12 months following application. Do not use on soils with pH above 7.8.
dimethenamid @ 0.56 to 0.98 lb/A	Most small seeded annuals.	Outlook 6E 12 oz/A to 21 oz/A.	From at planting until soybeans have reached unifoliolate stage.	Rainfall needed for activation.

Postemergence-All Cultural Systems

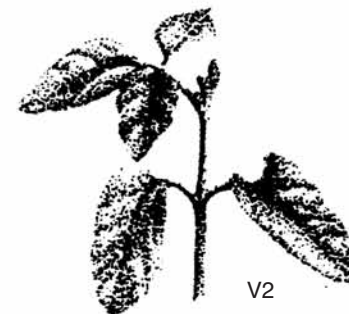
Soybean Growth Stages for Applying Postemergence Herbicides



VC
Unifoliolate leaves unrolled sufficiently so the leaf edges are not touching.



V1
Fully developed leaves at unifoliolate nodes.



V2
Fully developed trifoliolate leaf at node above the unifoliolate nodes.